



*The Mill and
Drill*

Vol 1, Issue 31 (Feb. 25,
2005)

DEAR CUSTOMER

Welcome to your weekly installment of "*The Mill & Drill*", TriMech Mfg.'s Technical Newsletter for FeatureCAM. This newsletter is intended to keep you, the hip TriMech FeatureCAM User, on the cutting edge of your FeatureCAM seat. Don't forget to visit www.trimech.com for additional information.

NOTICES

FeatureCAM is adding Machine Simulation.

Even as you enjoy the power and ease-of-use of FeatureCAM 2005, EGS is working hard on the next version of FeatureCAM. **Machine Simulation** is an exciting enhancement that is on the way. You will actually be able to see your *entire machine* during simulation, and the simulation will detect collisions. We will provide more details as they come available, but in the meantime you can read the press release at www.featurecam.com

Did you miss a newsletter?

Don't worry, the newsletters are posted, every issue, in PDF format on the TriMech Web Site (www.trimech.com). Just hover over TriMech Manufacturing, Technical Support and you will see *The Mill & Drill* letters to the right side.

Is there anybody else at your company who would like to receive the newsletter?

Send us their name and e-mail address, and we'll add them to the list.

FeatureCAM TRAINING SCHEDULE

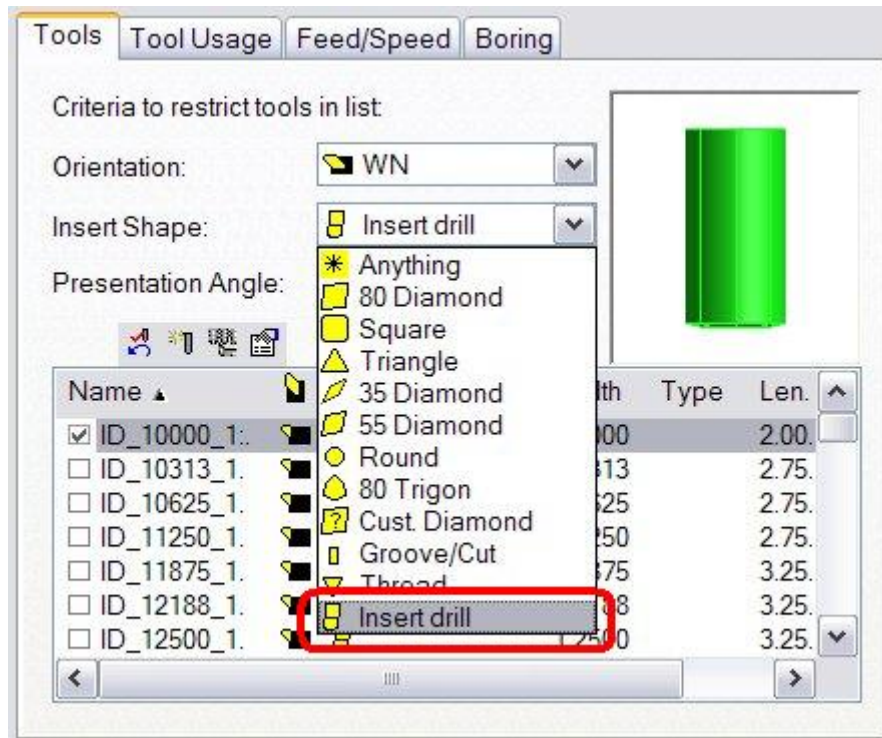
Note: Our main training facility is in Fishersville, VA, but we can make special arrangements for classes at any of our other TriMech offices (Columbia, MD; Pittsburgh, PA; Richmond, VA; Durham, NC; and Charlotte, NC). We also provide on-site training. Call (540) 949-7703 for rates and details.

| Fishersville, VA | |
|-----------------------------|----------------------------------|
| FeatureCAM Basic (2 days) | Mar. 9,10 Apr. 6,7 May 4,5 |
| FeatureCAM Advanced Milling | Mar. 17 Apr. 14 May 12 |
| FeatureCAM Turning | TBD |
| | |

TIPS AND TRICKS

Boring with an Insert Drill in TURN

Did you know that you can do this? When you create the bore feature, choose **Insert Drill** under the **Insert Shape** pull-down. Simple!



What are the hardware requirements for FeatureCAM?

This is a question we get from both prospective clients as well as established users who are buying new computers. The information *is* on the FeatureCAM web site, but it's a little hard to find. Go to www.featurecam.com and click on the **Products** link in the navigation bar. Once the Products page comes up, you will see a list of modules. Click on the module you are interested in. If you have more than one module, click on the base module. For example, if you have FeatureMILL 3D and the FeatureTURN add-on, click on FeatureMILL3D. Finally, click on the **System Requirements** link that you will see on the right-hand side. You will get a list of minimum and recommended requirements.

Trim/Extend

Here's a handy little tool that can help you edit geometry. It is perfect for when you are having trouble creating a closed curve because there is a gap in the geometry, and you need to stretch a line to intersect another. The problem with Trim/Extend is that it isn't the most intuitive tool in the world, so most people try it a couple of times with little success and give up. Here's the trick: It is a two-click operation, so be sure to grab an **endpoint** with your first click. Then, you will be able to drag that endpoint back and forth. The second click will place it in a new location. If you grab a line or arc in the

middle, it will actually get split at that point, and you will have a frustrating mess on your hands.

QUESTIONS/COMMENTS?

Please send any tips/tricks, feedback (regarding this newsletter)
or requests to be added/removed from our distribution list to...

ccole@trimech.com