



***The Mill and Drill***  
Vol 1, Issue 20 (Nov. 12, 2004)

**DEAR CUSTOMER**

Welcome to your weekly installment of "*The Mill & Drill*", TriMech Mfg.'s Technical Newsletter FeatureCAM. This newsletter is intended to keep you, the hip TriMech FeatureCAM User, on the cutting edge of your FeatureCAM seat. Don't forget to visit [www.trimech.com](http://www.trimech.com) for additional information.

**NOTICES**

**\*\*FLASH - TriMech Manufacturing now offers sheet metal fabrication software\*\***

That's right, TriMech is now a value-added reseller for Computes. Computes offers a powerful, integrated solution for programming punches, lasers, waterjets and plasma cutters. It also has MasterNEST - an ac system for single- or multi-sheet nesting. Call John Kanney for details. (540) 949-7703

**Did you miss a newsletter?**

Don't worry, the newsletters are posted, every issue, in PDF format on the TriMech Web Site ([www.trimech.com](http://www.trimech.com)). Just hover over TriMech Manufacturing, Technical Support and you will see "The Mill & Drill" letters to the right side.

**Is there anybody else at your company who would like to receive the newsletter?**

Send us their name and e-mail address, and we'll add them to the list.

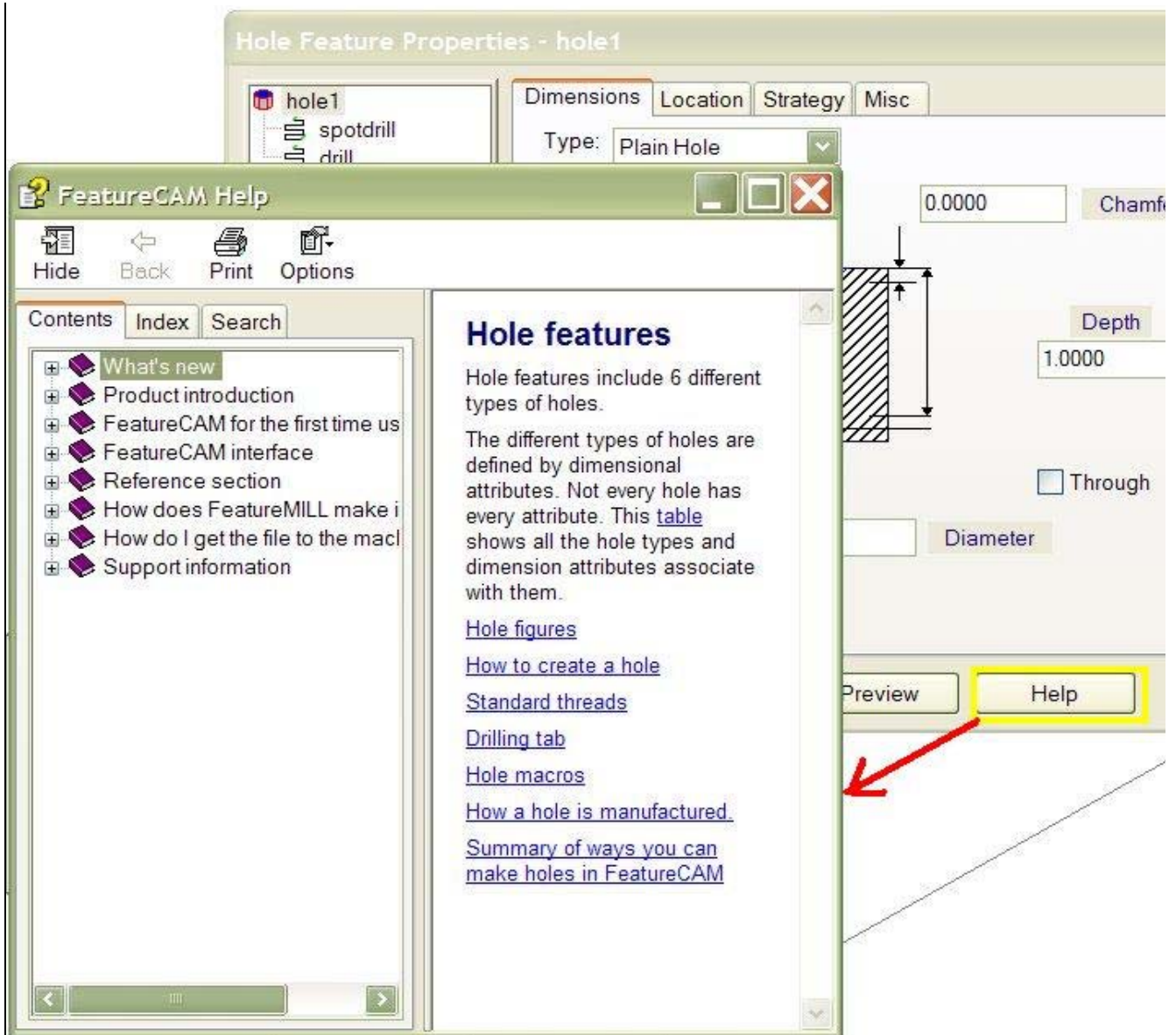
**FeatureCAM TRAINING SCHEDULE**

**Note:** Our main training facility is in Fishersville, VA, but we can make special arrangements for classes at any of our other TriMech offices (Columbia, MD; Pittsburgh, PA; Richmond, VA; Durham, NC; and Charlotte, NC). We also provide on-site training. Call (540) 949-7703 for rates and details.

<b>Fishersville, VA</b>	
FeatureCAM Basic (2 days)	Dec. 7,8
FeatureCAM Advanced Milling	Nov. 18
<b>TIPS AND TRICKS</b>	

**Help...**

... is closer than you might think. Don't forget that FeatureCAM has really good on-line help right at your fingertips. If you get stuck or have a question, click on the nearest **Help** button to get answers. The great thing about this is that the help is context-sensitive, so if you are in the middle of a hole feature, you will get help specifically about hole features! No digging around or searching required.



### Customizing FeatureCAM with Macros

FeatureCAM allows users to automate routines with the use of Macros. This is done by programming in Basic through the Basic IDE editor found under the View pull-down menu. Needless to say, this is only for advanced users who also happen to be Visual Basic programmers. However, there is good news for the rest of us. The guys at EGS have already written a bunch of macros and made them available here: <http://www.featurecam.com/support/Addins/index.asp>. The top part of the page has instructions on what macros are, and how to use them. The bottom of the page contains a whole list of macros that you can download and try. We will spotlight some of the more popular ones in future newsletters. Stay tuned...

### How do I get rid of that #\*&@ grid?

OK. There are times when the snapping grid can be handy, but how often do you draw or snap to consi

increments? You don't have to fight with the grid, just turn it off. Go to **Options>Snapping Modes** and off the **Grid points** button in the upper left-hand corner of the dialog box.

---

**QUESTIONS/COMMENTS?**

---

Please send any tips/tricks, feedback (regarding this newsletter)  
or requests to be added/removed from our distribution list to...

[jkanney@trimech.com](mailto:jkanney@trimech.com)

---