



TRIMECH
Manufacturing

The Mill and Drill
Vol 1, Issue 40 (May 6, 2005)

DEAR CUSTOMER

Welcome to your weekly installment of "*The Mill & Drill*", TriMech Mfg.'s Technical Newsletter for FeatureCAM. This newsletter is intended to keep you, the hip TriMech FeatureCAM User, on the cutting edge of your FeatureCAM seat. Don't forget to visit www.trimech.com for additional information.

NOTICES

Print your parts in 3D and in Color!

Need a quick prototype? If you are working with a CAD system like SolidWorks and you don't want to take the time and expense to machine a part, you can create your own prototypes with your own *printer*. This is really cool technology, and TriMech has it. We are excited to announce that TriMech is now an authorized dealer for **ZCorp 3D Printers**. For more information, check out the 3D printing products offered by TriMech at www.zcorp.com.

Did you miss a newsletter?

Don't worry, the newsletters are posted, every issue, in PDF format on the TriMech Web Site (www.trimech.com). Just hover over TriMech Manufacturing, Technical Support and you will see *The Mill & Drill* letters to the right side.

Is there anybody else at your company who would like to receive the newsletter?

Send us their name and e-mail address, and we'll add them to the list.

FeatureCAM TRAINING SCHEDULE

Note: Our main training facility is in Fishersville, VA, but we can make special arrangements for classes at any of our other TriMech offices (Columbia, MD; Pittsburgh, PA; Richmond, VA; Durham, NC; and Charlotte, NC).

We also provide on-site training.

Call (540) 949-7703 for rates and details.

Fishersville, VA

FeatureCAM Basic (2 days)	June 8,9 July 13,14
FeatureCAM Advanced Milling	May 12 June 16
FeatureCAM Turning	TBD

TIPS AND TRICKS

A word about post processors...

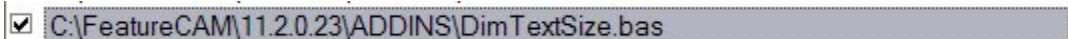
As you know, FeatureCAM comes with a post processor editor (X-Build) so that you can modify your posts. You also know that if you are on maintenance you are entitled to post processor creation or modification performed by us at TriMech. If any changes are made to your posts, by you or by us, ***please be VERY careful when testing your code at the machine***. Code that runs perfectly well on one Haas machine, for example, might not be exactly right on another. Machines are very picky, and one wrong sign or decimal place could mean disaster if you aren't paying attention. *Even if you are using proven posts and programs*, a single-step dry run is never a bad idea because even good code can be corrupted if you have a hiccup in your data transfer. Taking a little extra time to prove **every** program before your run could save you hours, days, or weeks lost to a machine crash.

Icons for Macros

We have discussed **Add-in Macros** in past newsletters. Once in a while, you will turn on an add-in (Options > Add-ins), and nothing seems to happen, right? No action occurs, and there is no icon anywhere. If this happens, you need to manually add a toolbar button and assign the macro to it. Here's how to do it:

For this example, we'll use one of the macros that comes loaded with FeatureCAM, **DimTextSize.bas**. This add-in allows you to change the text size of one or more dimensions without making a global change (which would be under Options > Viewing).

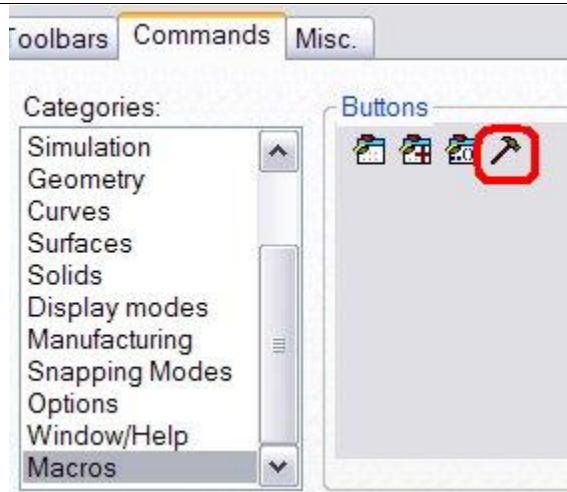
Turn the macro on by going to Options > Add-ins and checking the checkbox by the macro name.



C:\FeatureCAM\11.2.0.23\ADDINS\DimTextSize.bas

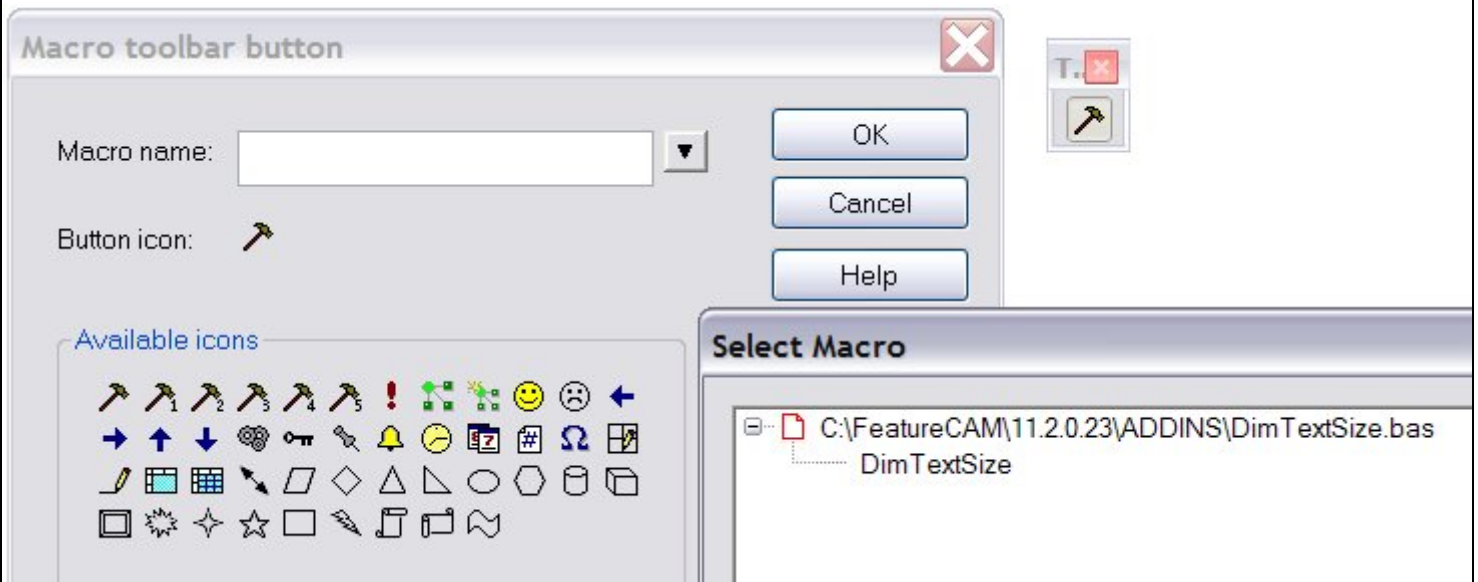
Hit OK. Nothing seemed to happen, did it? Since no icon appears for the add-in, we are going to have to assign one ourselves.

Go to **View > Toolbars** and click on the **Commands** tab. Scroll down to the last Category, **Macros**. Click on the button that looks like a hammer, which is the Custom Toolbar Button, and drag it out into your graphics area. It is now its own little toolbar.



Hit OK to close the Toolbars window.

Now, we need to link the icon to the add-in. Click on your new button. The first time this is executed, you will get a dialog box that allows you to assign it to a macro. Use the pull-down menu beside Macro Name to select DimTextSize. (If it is on, it will show up.) You can also change the button icon if you want. From now on, the new button will fire off the macro.



QUESTIONS/COMMENTS?

Please send any tips/tricks, feedback (regarding this newsletter) or requests to be added/removed from our distribution list to...

ccole@trimech.com