



**TRIMECH**  
Manufacturing

## *The Mill and Drill*

Vol II, Issue 7  
(September 23, 2005)

### DEAR CUSTOMER

Welcome to your biweekly installment of "*The Mill & Drill*", TriMech Manufacturing's Technical Newsletter for FeatureCAM. This newsletter is intended to keep you, the hip TriMech FeatureCAM User, on the cutting edge of your FeatureCAM seat. Don't forget to visit [www.trimech.com](http://www.trimech.com) for additional information.

### NOTICES

#### **New Modules for FeatureCAM 2006**

In addition to the overall improvements and enhancements that the new release of FeatureCAM has to offer, there are a few entirely new modules that might interest you:

**Machine Simulation** - allows you to create or import solid models that represent your machine tool in simulation. This is a very useful tool for simulating the more complicated, multi- turret, multi-spindle machines that are on the market today.

**Multi-axis Turn** - provides the ability to program lathes with up to 4 turrets and 2 spindles.

**Network Tool and Material Databases** - enable you to have one shared database for all of your FeatureCAM seats. This an inexpensive and easy way to create more consistent NC programs company-wide.

If you think any of these modules can help you in your shop, contact John Kanney at 540-949-7703 for more details.

#### **Are you on maintenance?**

Please remember that if you are not on maintenance, you will *not* receive FeatureCAM 2006. Also remember that in addition to software updates, you receive technical support

Send us their name and e-mail address, and we'll add them to the list.

---

## FeatureCAM TRAINING SCHEDULE

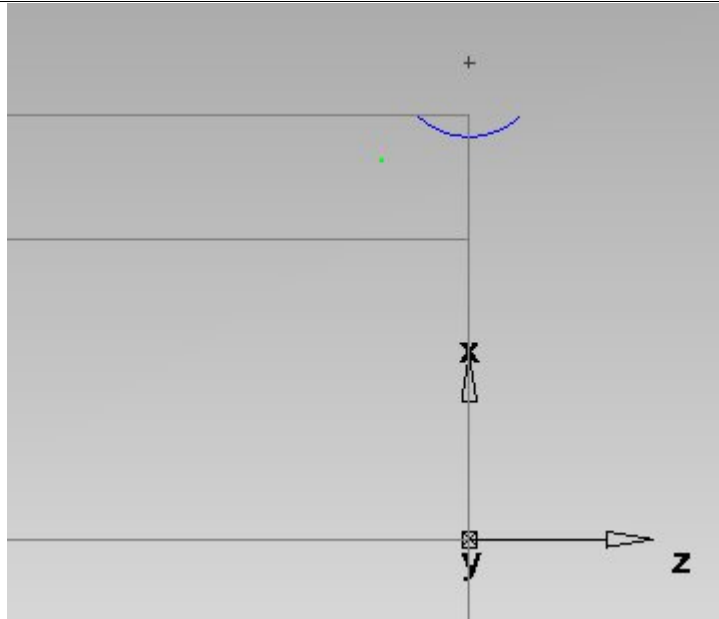
**Note:** Our main training facility is in Fishersville, VA, but we can make special arrangements for classes at any of our other TriMech offices (Columbia, MD; Pittsburgh, PA; Richmond, VA; Durham, NC; and Charlotte, NC). We also provide on-site training. Call (540) 949-7703 for rates and details.

Fishersville, VA	
FeatureCAM Basic (2 days)	October 12, 13 <b>Cancelled</b> November 2, 3
FeatureCAM Advanced Milling	October 20 November 10
FeatureTURN, FeatureWIRE, or Tombstone	By appointment

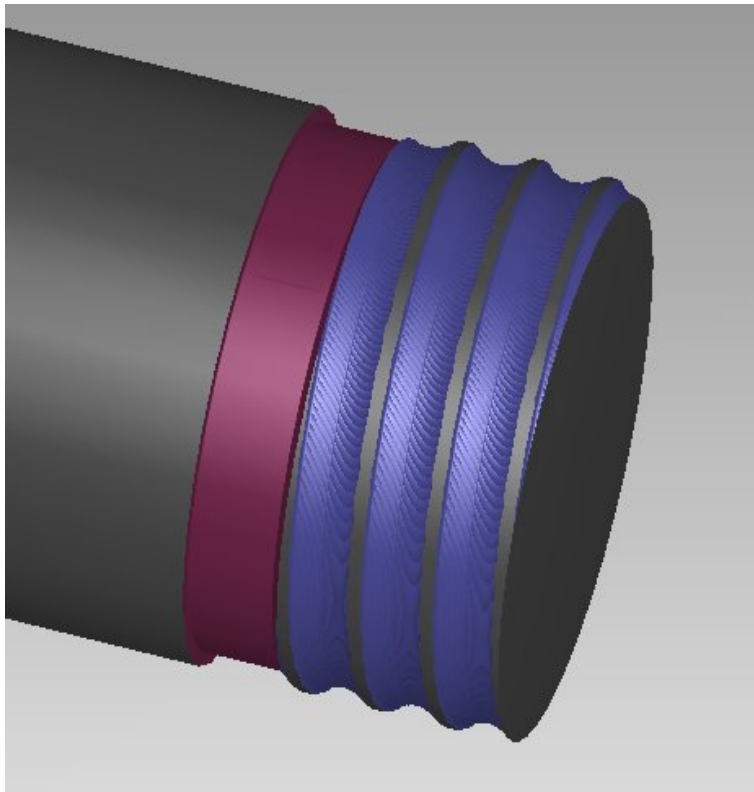
### TIPS AND TRICKS

#### **Turning Threads from Curves**

This is a great new addition to FeatureCAM 2006 that allows you to draw custom thread profiles. Just draw the profile for one thread:



Now, select the Thread feature from the From Curve section of the New Feature Wizard. Walk through the wizard, select a profiling tool, and you're finished!



## Z Rapid Plane Control

There are two main clearance planes in milling: the Plunge Clearance, and the Z Rapid plane. (Consult your Help for a detailed description of each.) You have always been able to change the Plunge Clearance at the feature level, but you've been stuck with one Z Rapid plane for the whole part. No more! Now, you can control the Z Rapid plane *per feature*. Look for the parameter on the **Misc.** tab of the feature properties. This is just another way that FeatureCAM gives you the ability to machine your parts your way.

## Hole Depth vs. Drill Depth

*When I create a hole feature, there is a field for depth on the Dimensions tab. Is that referring to the depth to the full diameter of the hole, or to the tip of the drill?*

That is the dimension for the full diameter of the hole. The actual Z value in the code will be deeper since the point of the drill has to be added.

*What if I want to control the exact depth of the drill?*

Go to the **Hole Properties**, click on the **Drill** operation, and click on the **Drilling** tab. Highlight the **Drill Depth** parameter, enter the desired value in the **New Value** field and click **Set**. This value will be the actual depth output in you code. This method also applies to spot drills, taps, etc.

## QUESTIONS/COMMENTS?

Please send any tips/tricks, feedback (regarding this newsletter)  
or requests to be added/removed from our distribution list to...

[ccole@trimech.com](mailto:ccole@trimech.com)